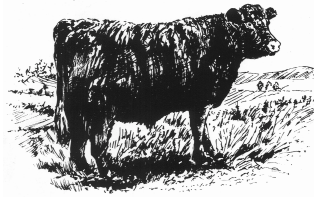


# THE LUING CATTLE SOCIETY LTD

WESTER DRUMLOCHY  
LORNTY  
BLAIRGOWRIE  
PERTHSHIRE  
PH10 6TD



Tel: 01250 873882

*e-mail: [secretary@luingcattlesociety.co.uk](mailto:secretary@luingcattlesociety.co.uk)*

---

03 August 2010

## PRESS RELEASE

### **Luings thriving on the Solway Coast**

Farmers in the south of Scotland and north of England will get the unique opportunity to see for themselves how Luing cattle are thriving on the Solway coast on Saturday 14<sup>th</sup> August. That is the date when the Rockcliffe Luing herd, based at West Preston, Kirkbean, will throw their doors open to the scrutiny of the farming community for the next Luing Cattle Society open day.

Home to the Murray family (Steven, Elaine and their daughters Heather and Hazel), the herd of pedigree Luing cattle now numbers well over 200 pedigree females with the main markets for stock being in-calf heifers sold through the breed's Premier Sale each February at Wallets, Castle Douglas and suckler bulls sold through Galloway Primestock. The Solway coast may not be a typical situation in which to find Luing cattle, however visitors will have a great opportunity to tour the farm to view the stock and hear from the Murrays how their cattle have adapted so well to grazing the marginal coastal pastures, including working with RSPB to graze land on their neighbouring nature reserve.

The event itself will be opened by QMS Chairman and local farmer Donald Biggar, and will run from 1.30pm featuring a farm tour with brief talks as well as stock-judging and live demonstrations of the Luing Society's own unique Dam Classification System.

Society Chairman Matthew Mauchlen commented, "This open day promises to be something a bit different from the conditions with which many farmers will associate Luing cattle, bearing in mind the breed originated on the West coast island of Luing where the largest herd still remains today. I would encourage beef producers to come along and see for themselves how the Luing breed are so adaptable and are producing very marketable cattle for the Murray family from marginal conditions on the Solway coast."

Ends

#### Notes to editors:

- There will be a free beef spit roast from 4.30pm and a bar with proceeds from the latter going to the local coastguard service.
- The Farm Tour will feature presentations from Steven Murray or Rockcliffe Luings, David Fairlamb from RSPB, Susan Duthie from Biobest Herdcare, Hugh Dickson from Bard Vets, Rhidian Jones from SAC and Robert McNee from the Luing Cattle Society.
- The day has been generously sponsored by Wallets Marts, RSPB, Biobest Herdcare, Solway Recycling, Tarff Valley, Murrays Farmcare, Wicks Bedding, Roshglen Farm Services, Tough Trailers, A.K. Farm Services, Gordons, Bard Vets, Pfizer Animal Health, NFU Mutual Dumfries, Tithebarn and Davidsons of Irongray.

- Directions – From Dumfries (approx 15 miles), take the A710, drive through New Abbey and then Kirkbean, follow signs for Southernness, West Preston, signposted from there. From Castle Douglas (approx 13 miles), take the A745 to Dalbeattie, then the A710 Solway Coast Road to Mainsriddle, follow signs for Southernness – West Preston, signposted from there.